

Ocean Sundown - Artwork in Progress by Margaret Shaw

I took this stunning sunset in Florida and have had it in mind to paint since getting home.



Outline drawing with white pastel pencil to get items in place. A3 grey pastel paper



First layer of pastel following outlines



Ocean Sundown - Artwork in Progress by Margaret Shaw

Then rubbed in



2nd layer of pastels



And again blended with fingers. Not happy where the clouds meet at the mid left but that can be worked on.



Ocean Sundown - Artwork in Progress by Margaret Shaw

Next sky layer – refining each time.



Here's the pastels used.



More work on the sky with the white and pale peach pastels to create some fluffiness in the clouds. Drew in the horizon line. Marked in the white and dark areas to create the waves.



Ocean Sundown - Artwork in Progress by Margaret Shaw

Added blues and greys to block in the sea, rubbing the pastel into the paper. Fingers along the greys, then the blues and lastly the whites. Right hand for the darks and left hand for the lights.



Started detailed work on the sea. Extra pastel layers on the surface and using a blender to create some texture. Looking where the surface lightens as I move away from the horizon. Darkening and shaping the curve of the bottom of the waves before adding the white foam with short taps and strikes. Noting how the nearest part of the ocean being pulled back into the wave.



More details with lines and dragging the pale peach on the surface. Diagonal swirls to make the forefront wave with white and light greys. Darkest grey underneath the wave. White to add in the suns reflection.

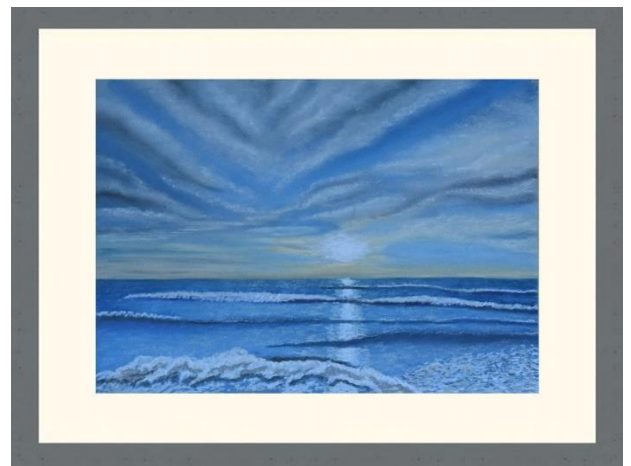


Ocean Sundown - Artwork in Progress by Margaret Shaw

In the final session blended gently to keep the energy in the mark making. Extended the wave lines across the white sun reflection. Added some more of the pale peach into the sea. Removed the right foreground wave and added more foam.



Framed in grey.



Added to [Sunset Artwork gallery](#)

[Prints](#) available

[Cards](#) available

© 2024 Margaret Shaw