

After the Sunset- Ullswater- Artwork in Progress by Margaret Shaw

I took this photo in December and have been pondering about pastels since.

As I want to have some light in this I decide on off white A3 pastel paper.



Started by drawing in a light outline with grey pastel pencil.



First layer of pastels in the sky following my markings.



After the Sunset- Ullswater- Artwork in Progress by Margaret Shaw

Stroked with a flat hand across the paper.



Second layer of pastel applied starting at the top and then moving to the left of the paper to capture the darker clouds.



Completed the sky cutting back into the clouds at the left and keeping adding more pastel and blending. Slightly darkening the blues with greys and lastly adding the brightest whites. Over the top of the mountains changed the direction of the pastel to a steeper angle where the lowest grey clouds seem to be pushing back into the sky with light from the set sun.

Marked in the furthest mountains.



After the Sunset- Ullswater- Artwork in Progress by Margaret Shaw

Used a blender to get a sharp edge in the mountain levels, darkening the browns as I came forward.

Before putting in the darkest of the mountains added the first layer of pastel in the water. Grey, pale orange and peach.



Rubbed the water into the paper.



Added the darkest mountains at the front and needed to do some altering when I miss the shape above the bump in the middle. Lifted as much of the dark as possible with a putty eraser and then re-worked carefully with the sky lights.



After the Sunset- Ullswater- Artwork in Progress by Margaret Shaw

Rather than leave the mountains flat, put marks on them with different browns and the sky light colours then used the blender to work in. Increasing the size of the lines as I worked forward.



At this point I decided that the sky needed darkening at the top of the page which has now made the lights on the right of the picture pop out. I also added the band of yellow ochre around the middle white cloud which has given it more definition.



Fine lines of sky colours put into the water following the colours in the sky. Then worked into the paper with a blending stick make the lines longer working towards the foreground. Lightly stroked over with the flat of all fingers together.



Decided that the mountains were too uniform and the nearest too dark. Added lines of pastel from all the browns used.

After the Sunset- Ullswater- Artwork in Progress by Margaret Shaw

Blended in the mountain lines and added sparkle to the water by gently stroking the lightest pastels over the water. I keep the pastel on the water area to a minimum so that the texture of the paper is still visible and I leave areas of pastel only on the top of the texture.



At the point there was a dilemma. Do I leave as is or do I stay with with reference photo and add the plants / trees at the front? Onto the pc and a play with paint.



I decided on the tree and worked on the painting. It didn't go well. The tree shape was all wrong and too large covering up some of the work on that glorious sky. I tried to shape back into the tree but was getting dirty grey.



After the Sunset- Ullswater- Artwork in Progress by Margaret Shaw

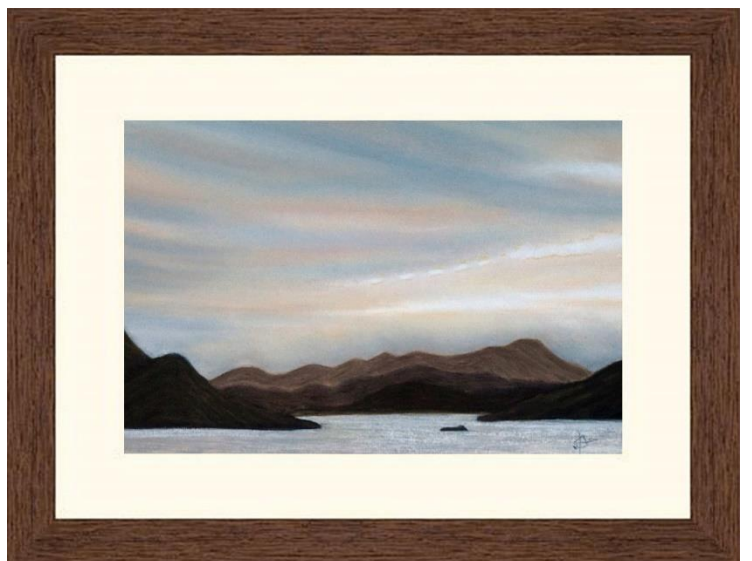
I made the decision to crop and had a mount that made the most of the sky whilst eliminating the tree.



Here it is without the mount.



Into a walnut frame.



Added to the [Sunset Art Gallery](#)

[Cards available](#)

© 2024 Margaret Shaw