

Along the Seawall - Artwork in Progress by Margaret Shaw

I like this image photographed recently on the Moray Firth at PortGordon.

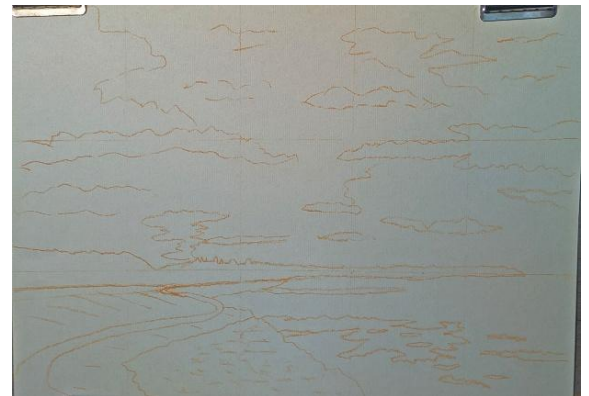
I particulalry like the curves in the sea wall and the dark silhouettes.



However as I didn't particulalry feel that a painting could have so much dark area. Therefore I lightened the image using photoshop to see more details.



Drawing onto A3 pastel paper.



Sky blocked in and started on detail. Marked some houses on the left but not sure that these will show too much when I reach that area with the darks.



Along the Seawall - Artwork in Progress by Margaret Shaw

More layers of pastel added in the sky, constantly blending and building up. Used mainly fingers and a blending tool for the sun area.



Onto the mid ground. Blocked in houses with red and grey shades. Then completed the land behind the houses with the dark purple from the sky. This will enable me to use blacks in the foreground rocks and create a better sense of distance.



Added a dark wall and darker area at the bottom of the land. Filled in the sea and the rocks and marked in the winding seawall.

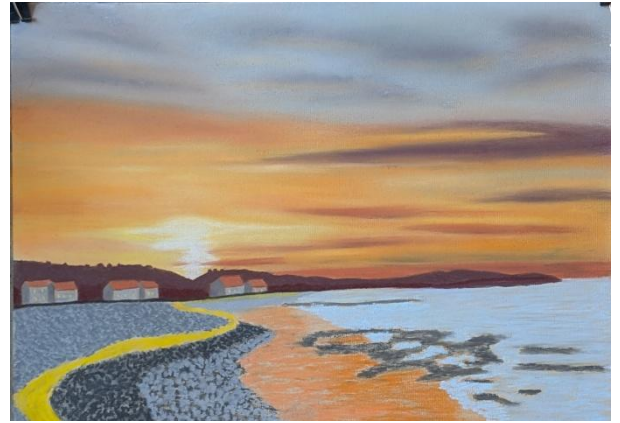


Decided that the blocking in for the sea wasn't right so had a play with paint on the pc to sort myself out. Happy with the alterations so onto lifting some pastel to sort this out.

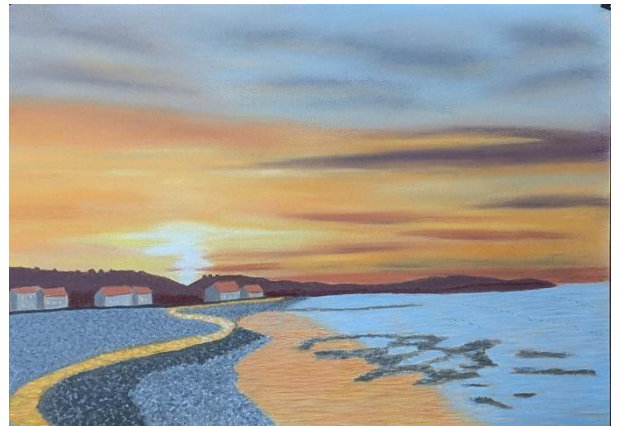


Along the Seawall - Artwork in Progress by Margaret Shaw

Changed the sea line as worked on the computer. Put windows in the houses. Changed the tonality on the rocks to medium, dark and medium.



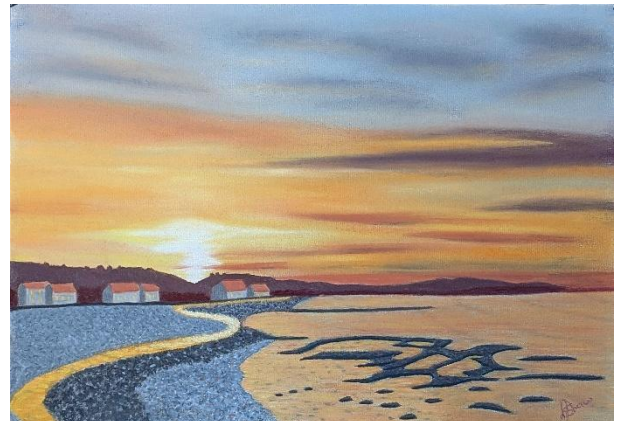
Completed the sea wall and the rocks under the distant houses. More pastel added to the sea.



Added some blues into the orange sea area and orange into the blue sea area. More rock like larger marks in the dark shore area. Darkened the rocks in the sea and added lines at the bottom to create a 3d effect. Various tones of smaller rocks near the shoreline to give the impression of some above the waterline and others below.



And then I had a complete about turn and decided that the water ought to be orange – which was not an easy task. I emphasised the house windows and added more texture to the rocks.



Along the Seawall - Artwork in Progress by Margaret Shaw

Into a grey frame I think.

Added to the [sunset gallery](#)
Prints and cards available.

© 2025 Margaret Shaw

