

Highland Light 5 - Artwork in Progress by Margaret Shaw

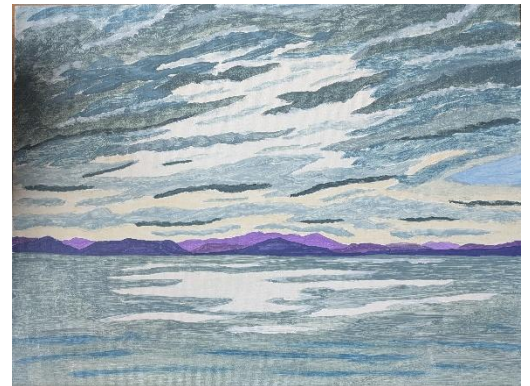
I took this picture when visiting Ardersier on the Moray Firth. Having just finished Ullwaters Eastern Shore I had left over paint of blue / greys that would work for the clouds in this image.



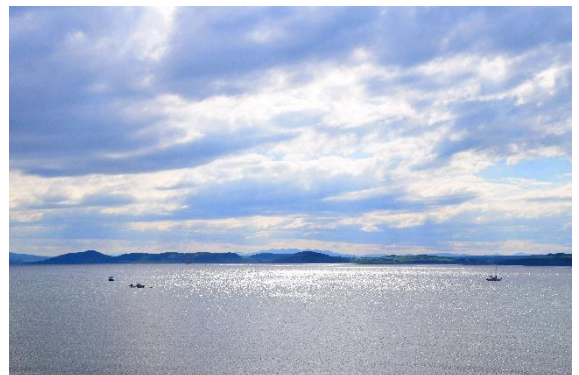
Quickly took a pastel pencil to a gessoed board and did a fast outline drawing.



Completed a tonal underpainting using left over paint. This is grey greens and the image needs blue greens. Grey greens happened when yellow ochre gets into the mix.



To help with the painting saturated the colour on the photo and also produced a black / white copy.



Highland Light 5 - Artwork in Progress by Margaret Shaw

Next layers of acrylic in the sky saw much more tonality. Blue and browns for the greys with some burgundy to give a slight purple shade complimenting the purple land in the distance.



Completed the mountains and refined the darkest tones in the sky. Painted the water with the sky light grey.



Moved onto the blues with Prussian blue and an Ultramarine Prussian mix. The sky started to refine.



Completed the medium sky tones and then moved into the lights with a pale lavender mix to complement the mountains.



Highland Light 5 - Artwork in Progress by Margaret Shaw

Onto the lights in the sky with white at the top, coming down to pale ochre and slightly darker ochre at the bottom.



Slightly darkened the mid ochre. Next worked the patterns in the water. Not wanting the water to complete with the sky worked it in the light and mid tones.



Final coat of paint on the water and completed.



Into a mid grey frame.

Added to [Landscapes](#) gallery.
Prints and cards available.

© 2025 Margaret Shaw

