

Morris in the Woodland - Artwork in Progress by Margaret Shaw

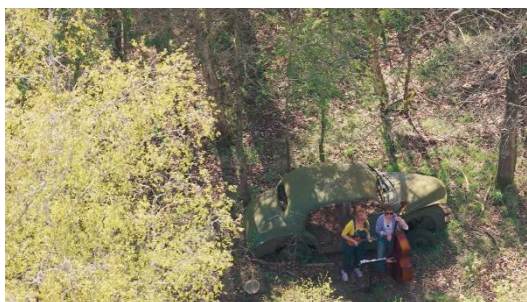
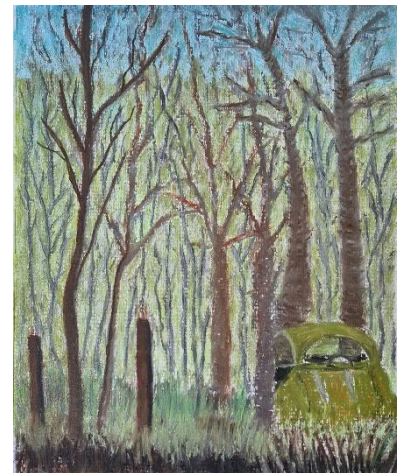
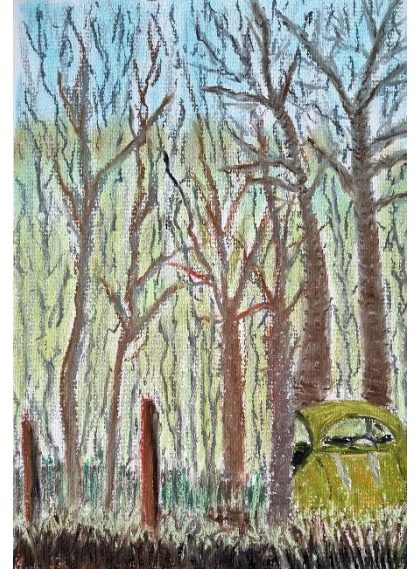
I was involved in making a promotional video for [EVAN](#) and was filmed sketching in a Woodland just outside Penrith.

What immediately caught my attention was an old car that had been dumped (clearly several years ago) in the wood. Somehow it was becoming part of the scene. Nature was simply taking over the car and it was fitting in.

Here's where I was at the end of the session (about 1 hour). That was being accompanied by 2 EVAN musicians who were playing and singing, which made it a lovely afternoon.

I decided this was worth taking further and wanting to make more of the car I cropped the scene. Made a tweak to the car and got the tree trunks going through it. Some work on the background and the grasses before starting darkening the foreground trees.

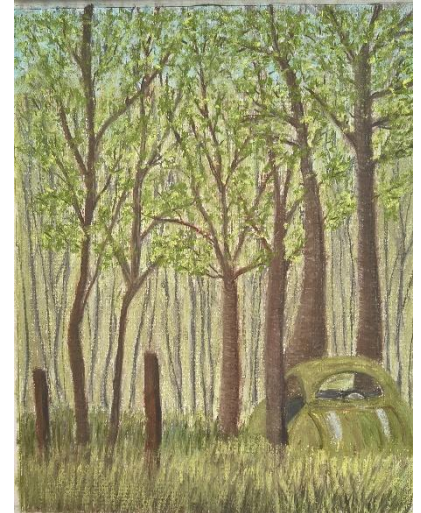
I didn't take a photograph on the day so working from memory and a little help from a woodland scene taken at Talkin Tarn. Then I saw the video (not yet released) and took a couple of stills from that to help me along.



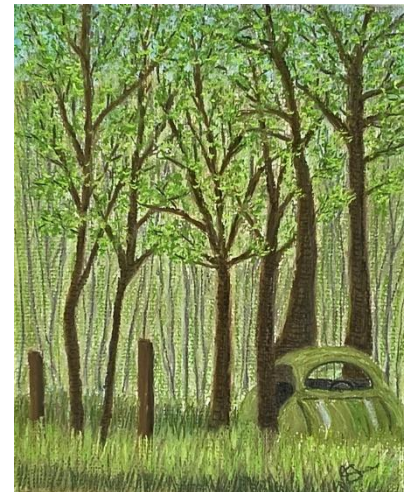
Morris in the Woodland - Artwork in Progress by Margaret Shaw

I decided to include the car bonnet – I don't think it's a Morris but that's what I got in my head, so the bonnet is round.

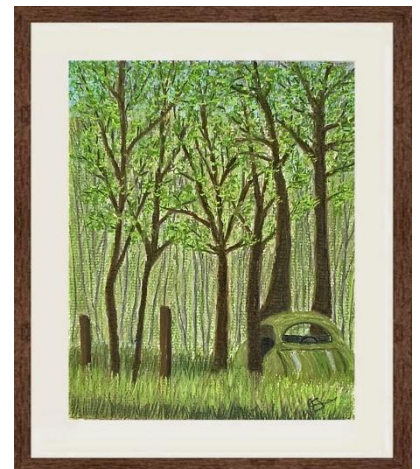
More work in the background before putting leaves and twigs on the trees,



Final session was to increase tonality, so darks on the trunks and the twigs. More lighter leaves. More green in the background. Bits of the car darker and more changes of tone in the grasses to represent a band of sunlight. In case you're wondering about the green colours from the previous pic in progress – this has been through photoshop to make it agree with the actual painting.



Heading a dark wood frame.



Added to [landscapes](#) gallery.

Cards available.

© 2026 Margaret Shaw