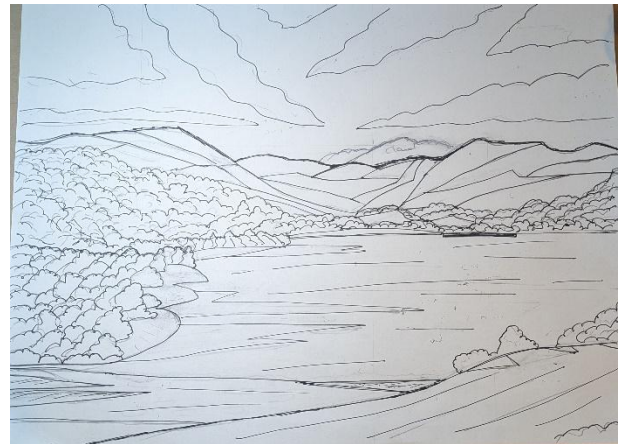


Looking west at Ullswater's End - Artwork in Progress by Margaret Shaw

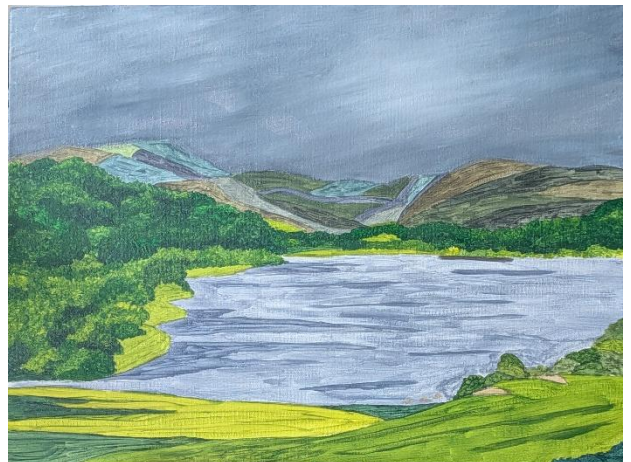
As I have completed North, South and East of Ullswater in my poster / abstract style, the final work is West. Here's the west reference photo.



Step 1 was to draw to size where I got confused when inking the outlines and made what was supposed to be cloud part of the mountain. Wrote the word cloud to remind me and scribbled over with white pastel.



Transferred to canvas board and completed the underpainting / blocking in. Then when I realised that I had painted the trees in a realistic manner (and I liked them). I therefore overpainted the markings in the sky and created a blended sky.

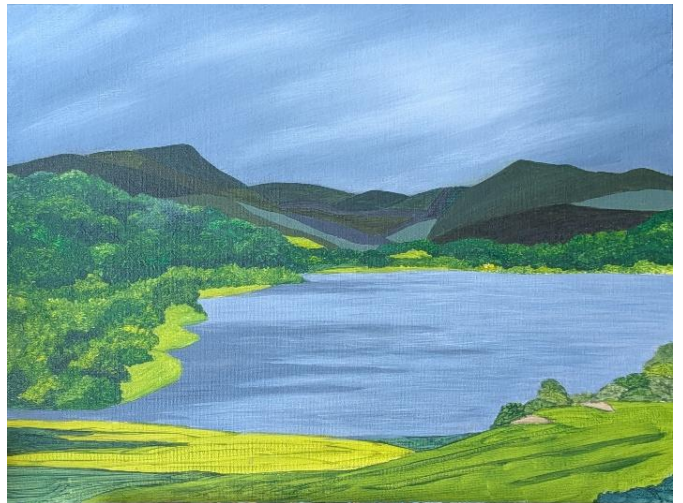


Looking west at Ullswater's End - Artwork in Progress by Margaret Shaw

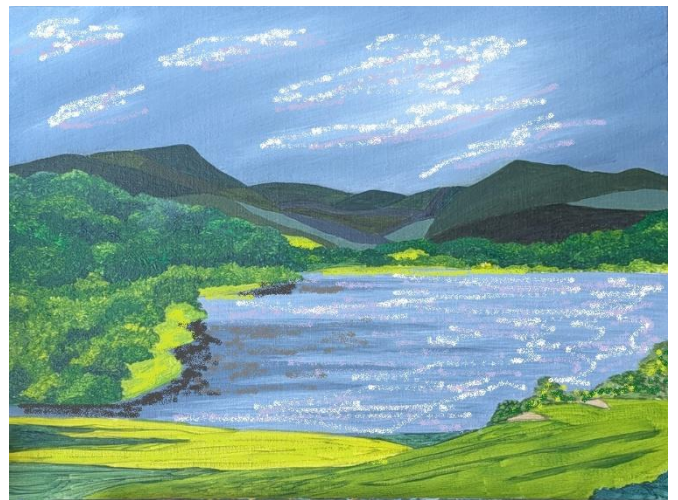
More work on the sky to obliterate some patchy areas with more blue/grey and then using the same colours moved onto the water. Reducing the abstraction patterns and creating more of a blend.



Into the distant mountains with the top layer of paint. Olive greens and browns to create the tones and sharpened the mountain tops, typical of the Ullswater landscape.



Left the painting for a holiday and on returning decided that the colours may need ramping up. White and lavender in the sky and make sure I keep those yellow greens. Get the dark darks in the water on the shoreline. Played on the pc



Looking west at Ullswater's End - Artwork in Progress by Margaret Shaw

Added the purples and they didn't blend so re painted all the sky and water and lost the lights.



Another session with the sky and water and have created more interest in the sky and water.



Re defined the sharpness of the hills as the sky had bled into them



Looking west at Ullswater's End - Artwork in Progress by Margaret Shaw

Top layers of paint on the land masses, then decided that I didn't like the water, so painted out the dark purple areas and left to dry.

This wasn't what I intended. I found this a little boring and lacking. I liked the light greens. The background mountain colours were too dark. I'd lost the greys. The water expanse was too much without the dark areas.

I hadn't swapped from my cheaper acrylics (normally used just for blocking in), and this was becoming part of the struggle



Onto the drawing board with pastel pencils to work out and head back to the intended abstraction. Changed to my artist quality acrylics. Blue Grey in the sky. Marked in abstract clouds and re-added the dark lines in the water along with extra lights.



Greys Lavender and White into the clouds and repainted the mountains making sure the distant mountains were lighter.



Looking west at Ullswater's End - Artwork in Progress by Margaret Shaw

Added some light lavender into the clouds. Edged the clouds near the mountains with white and lavender and started on the dark green trees.



Completed the dark green trees



Repainted the whites to stop any transparency and make sure they were bright.



Looking west at Ullswater's End - Artwork in Progress by Margaret Shaw

Final layer on the light trees. Added a dark line to the foreground. Made the 2 triangles light green to take that colour through the painting. Final paint layer on dark tones in the water



Bright greens final layer, edging the land on the left shore. Whites in the water. Decided to change the dark green stripe to light green.



One more coat of paint on the water white and foreground light green. Signed.



Looking west at Ullswater's End - Artwork in Progress by Margaret Shaw

Heading into a white frame.

Added to the [Landscape Gallery](#).
Prints and cards also available.

© 2025 Margaret Shaw

